

Socrative

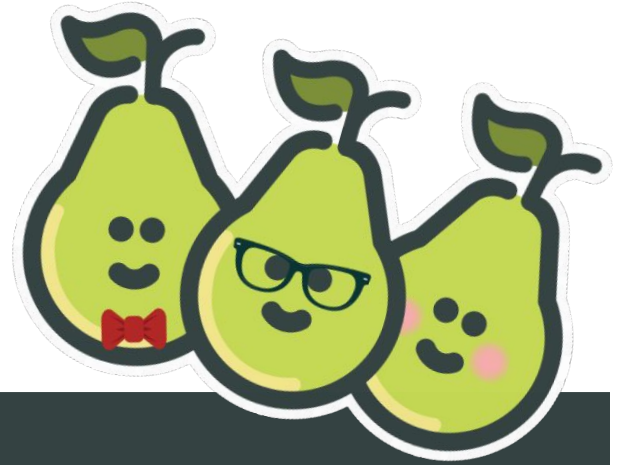
“I use the Space Race to provide a fun group quiz - students see their spaceship advance as they answer questions correctly.”

- Ms. Dasgupta, ESOL



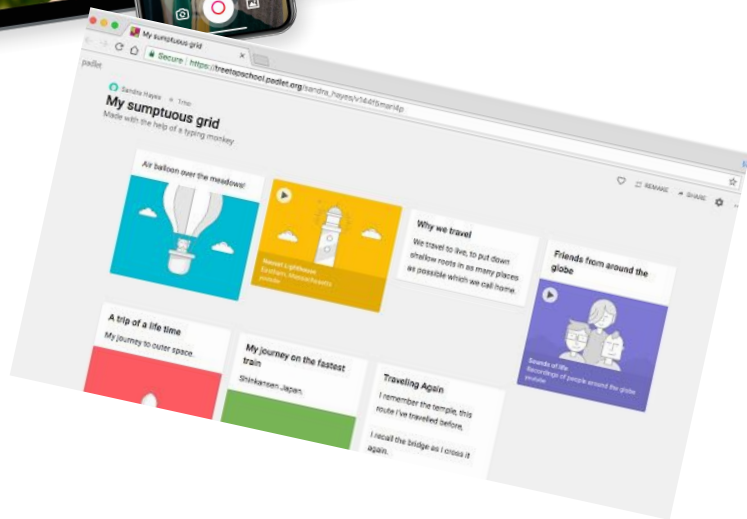
Pear Deck

Pear Deck is a new tool that teachers can use to make PowerPoint presentations interactive and fun for students!



Pear Deck[™]
FOR ACTIVE CLASSROOMS

FlipGrid and Padlet



“We are using FlipGrid and Padlet to share learning experiences with a school in Romania as part of the Global Classroom School”

- Ms. Alam, Science

BoardWorks Interactive Lesson

7th graders use BoardWorks Interactive Lessons in science class to learn about environmental science topics.



Problems with the fish - Video

5



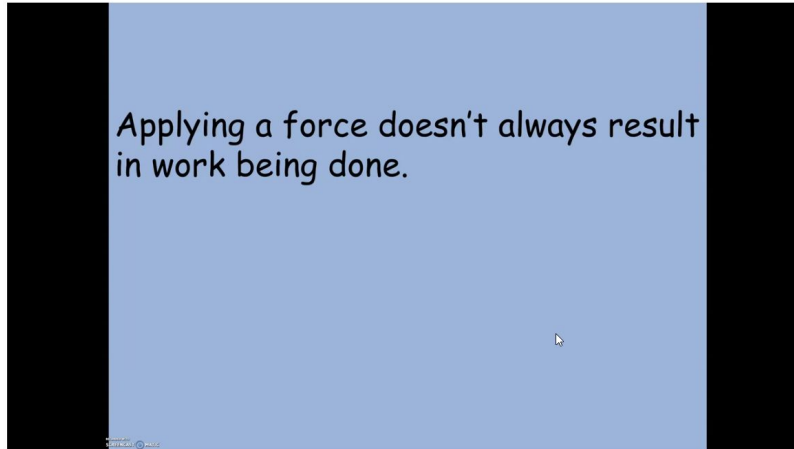
Click on [Here](#) to watch the video



EdPuzzle

Physical Science teachers use EdPuzzle to engage students during a video.

Work and power 1
Alpa Tripathi



OPEN ENDED QUESTION

Is work always being done when you apply a force to an object?

Rewatch

Skip

Submit

Desmos -online graphing calculator activities

desmos

Search for an activity



Sign up for Desmos | Log in | Help | Contact Us

Create Account

or

Sign In

Linear

Linear Systems

Modeling

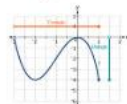
Quadratic

Transformations

Screens

Student Preview

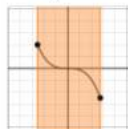
1 Explore Domain and Range



In this activity you will be exploring domain and



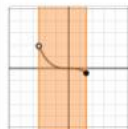
2 Explore Domain



Move the endpoints of the function to see how the graph



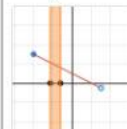
3 What is the Domain?



What is the domain of the graph to the left?



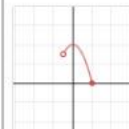
4 Adjust the Domain



A line segment has been graphed to the left. Move the



5 Settle a Dispute



Jenna and Monroe are having an argument



6 Pick the Correct Graph

Which graph has a domain of $-2 \leq x \leq 4$?



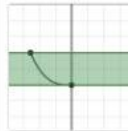
7 Explore Range



Move the endpoints of the function to see how the graph



8 What is the Range?



What is the range of the graph to the left?



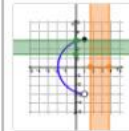
9 Adjust the Range



A line segment has been graphed to the left. Move the



10 Domain and Range



Adjust the domain and range so that the entire graph



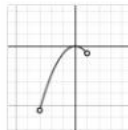
11 Domain and Range



What is the range? Pay special attention to the endpoints!



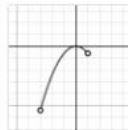
12 Domain and Range



What is the domain of the graph to the left?



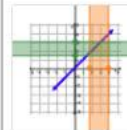
13 Domain and Range



Aaron says the range of the graph to the left is



14



Adjust the domain and range so that the entire



15



What do you think the domain of this graph might be?



Kahoot!

Many teachers use Kahoot! to have fun and competitive games to review material.



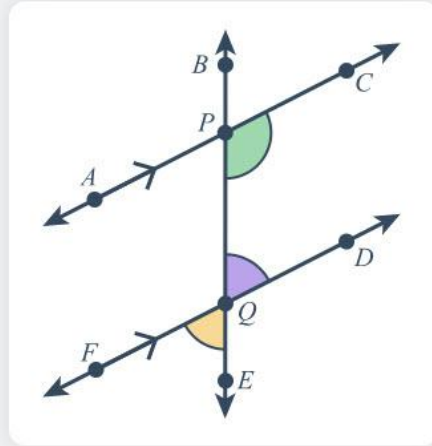
Geometry Honors - [MathSpace](#)

← 3. Parallel & Perpendicular Lines

Show all steps



1 Consider this diagram and answer the questions below:



1a How are $\angle EOF$ and $\angle BOD$ related?

Skip question

They are vertical angles.

They are corresponding angles.




Submit



HyperDoc


stewardship

Be a Global Ethical Citizen!

Explore	Answer the Questions Below
<p>Click the picture to watch the video</p> 	<p>Highlight the key points from the video.</p> <div data-bbox="529 500 832 634" style="border: 1px solid black; height: 123px;"></div>
<p>Explore the issues of the Bay</p>  <p>Chesapeake Bay Program <i>Science. Restoration. Partnership.</i></p> <p>Chesapeake Bay Website</p>	<p>Identify 4 issues of concern in the bay.</p> <div data-bbox="529 689 832 904" style="border: 1px solid black; height: 197px;"></div>
 <p>What is Recycling? EBook</p>	<p>Why is recycling important?</p> <div data-bbox="529 958 832 1035" style="border: 1px solid black; height: 70px;"></div>

Life Science teachers use a HyperDoc (interactive document with links) to lead students through knowledge exploration.

Math 7 Honors - [Khan Academy](#)

Search icon | Khan Academy | Donate | bltin

students ▾ | doing | Different questions ▾ | due by Oct 28th, 11:59 PM ▾ | Save | Assi

Points on the coordinate plane

CCSS Math: [6.NS.C.6](#), [6.NS.C.6c](#)

Google Classroom | Facebook | Twitter | Email

Which ordered pair is *not* graphed below?

Choose 1 answer:

(A) $(-3, -8)$

(B) $(3, -8)$

(C) $(-3, 8)$

Remember with Khan you can always....

Stuck? [Watch a video or use a hint.](#)

Wizer.Me

Teachers can use wizer.me to create digital worksheets. Students are able to answer different types of questions through their laptops.



wizer.me

Add a task



Open Question



Multiple Choice



Blanks



Fill On An Image



Matching



Table



Text



Image



Video



Link



Embed

Math 7 Honors: Math Playground

LOCATE THE ALIENS...

LOST ALIENS CAN BE SEEN ON A GRID MAP. CAN YOU NAME THEIR POSITIONS?

Type in the x and y coordinates of the lost aliens: (,) press enter

Time Left: 70 sec
Score: 0 aliens

Location of the Lost Alien

MathPlayground.com

Sponsored Topics ▶

01. Create A Car ▶

02. Fun Math Lessons ▶

04. Math Tutoring Services ▶

Advertisement | Go Ad-Free