



**WELCOME TO**

**CURRICULUM NIGHT**



January 17, 2024

Snow Date: January 24, 2024

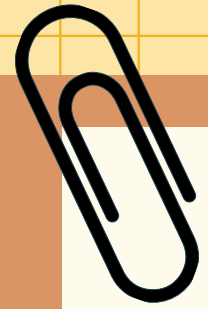
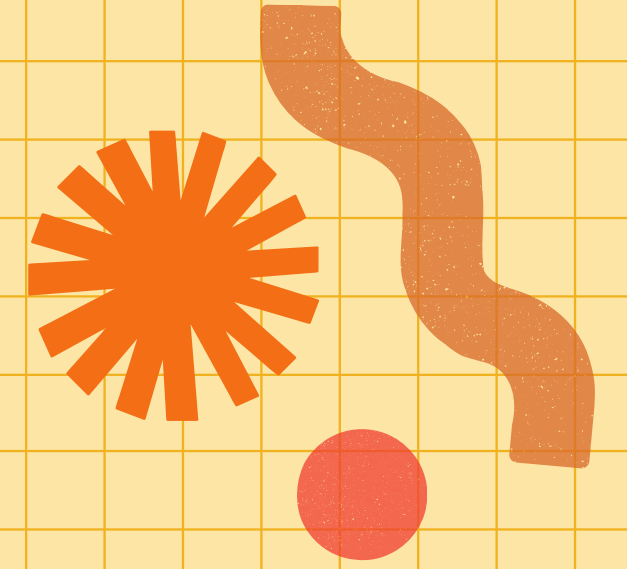


# ***ESOL SERVICES AT KJMS***





# ***GOOD TO KNOW***



- KJMS Website: Search “Academic Advising” or “Course Selection” for Course Catalog and Timelines
- SIS Parent VUE Account needed to see FINAL Course Selection entries (under Course Request Button)
- Spring Parent Information - How Middle School Works



# ELEMENTARY SCHOOL CLASSES

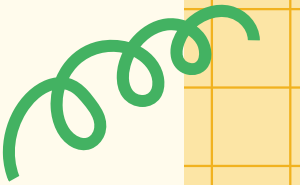
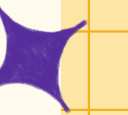
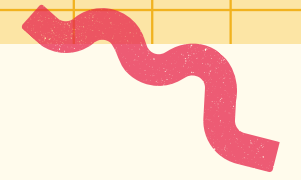
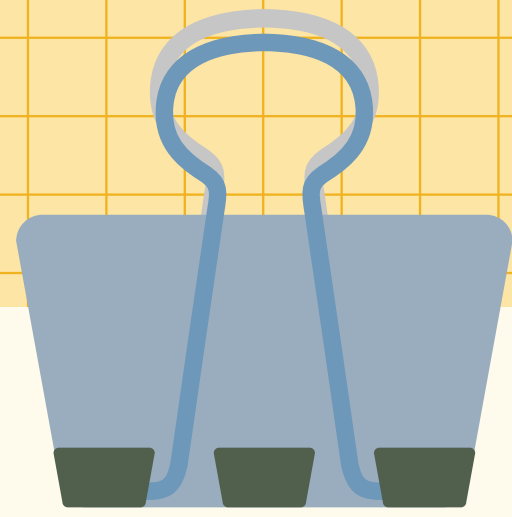
## Elementary School

- in homeroom with same kids and teacher most of the day
- all take the same core or required classes
- have some specials with your class, sometimes with other kids
- some after school clubs and activities

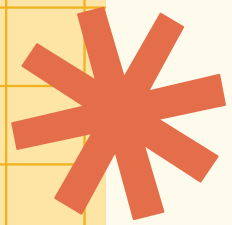
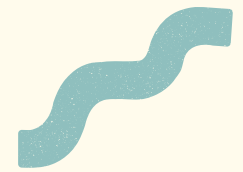
# MIDDLE SCHOOL CLASSES

## Middle School

- have 7 (maybe more!) different teachers, each class has different mix of kids
- all students have core/required classes but can choose an advanced version if you are ready and interested
- have elective class choices, some elective selected for you to keep you on track to graduate
- many after school clubs, activities, and academic help

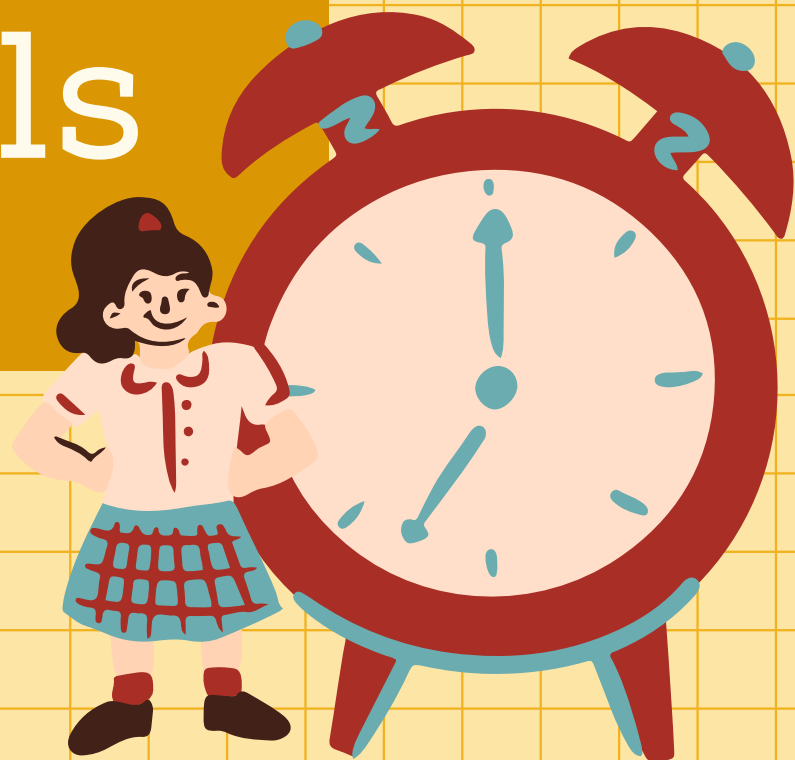


**ESOL- ENGLISH FOR  
THE SPEAKERS OF  
OTHER LANGUAGES**



# ESOL LEVELS

English  
Language  
Proficiency  
ELP Levels



1

Entering

2

Beginning

3

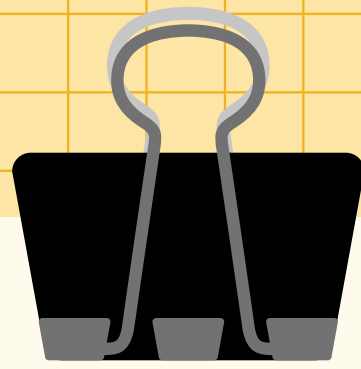
Developing

4

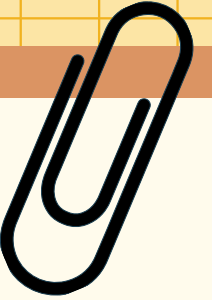
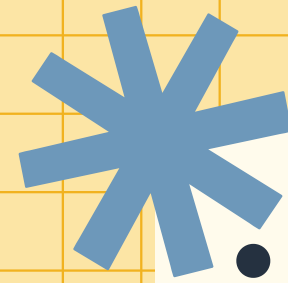
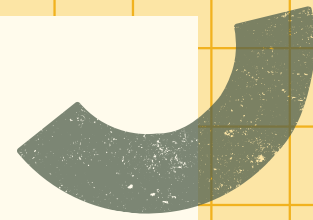
Expanding







# WIDA


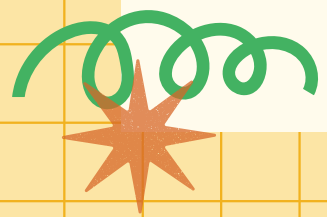


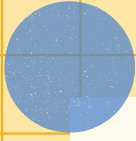


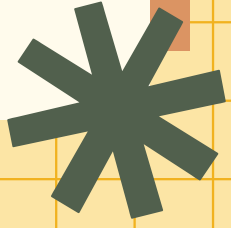
- A language test given in January/February
- 4 parts: Listening, Speaking, Reading, Writing
- We receive the scores in June
- Students find out their ESOL level for next year in June
- WIDA score 4.4 lets the student exit out of ESOL program



# ESOL CLASSES IN MIDDLE SCHOOL



- 
- 
1. English
  2. Math
  3. Science
  4. History

- 
- 
- 
- 
1. PE
  2. ESOL
  - Literacy

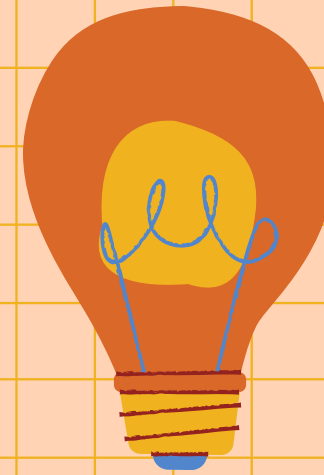


Electives



Level 1 & 2 students spend most of their day with an ESOL teacher

English, Reading, Science & Social Studies with ESOL teacher



## LEVEL 1 & 2 COURSE OPTIONS

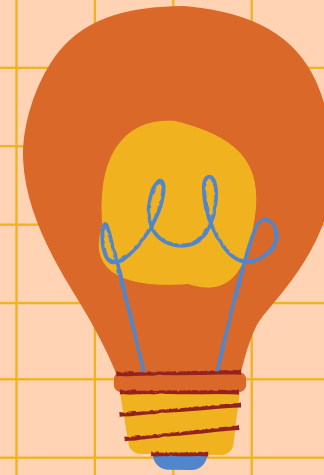
1. ESOL Beginning English
2. ESOL English Language Development (Reading)
3. ESOL FOCUS Science
4. ESOL History
5. Team Taught Math 7
6. PE

Numeracy/Rational  
Numbers Math Support  
class (if eligible)  
OR  
Elective



Level 3 and 4 students usually take only 1 ESOL class.

Their other classes are General Education with English speakers

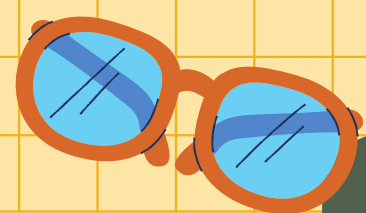


## LEVEL 3 & 4 COURSE OPTIONS

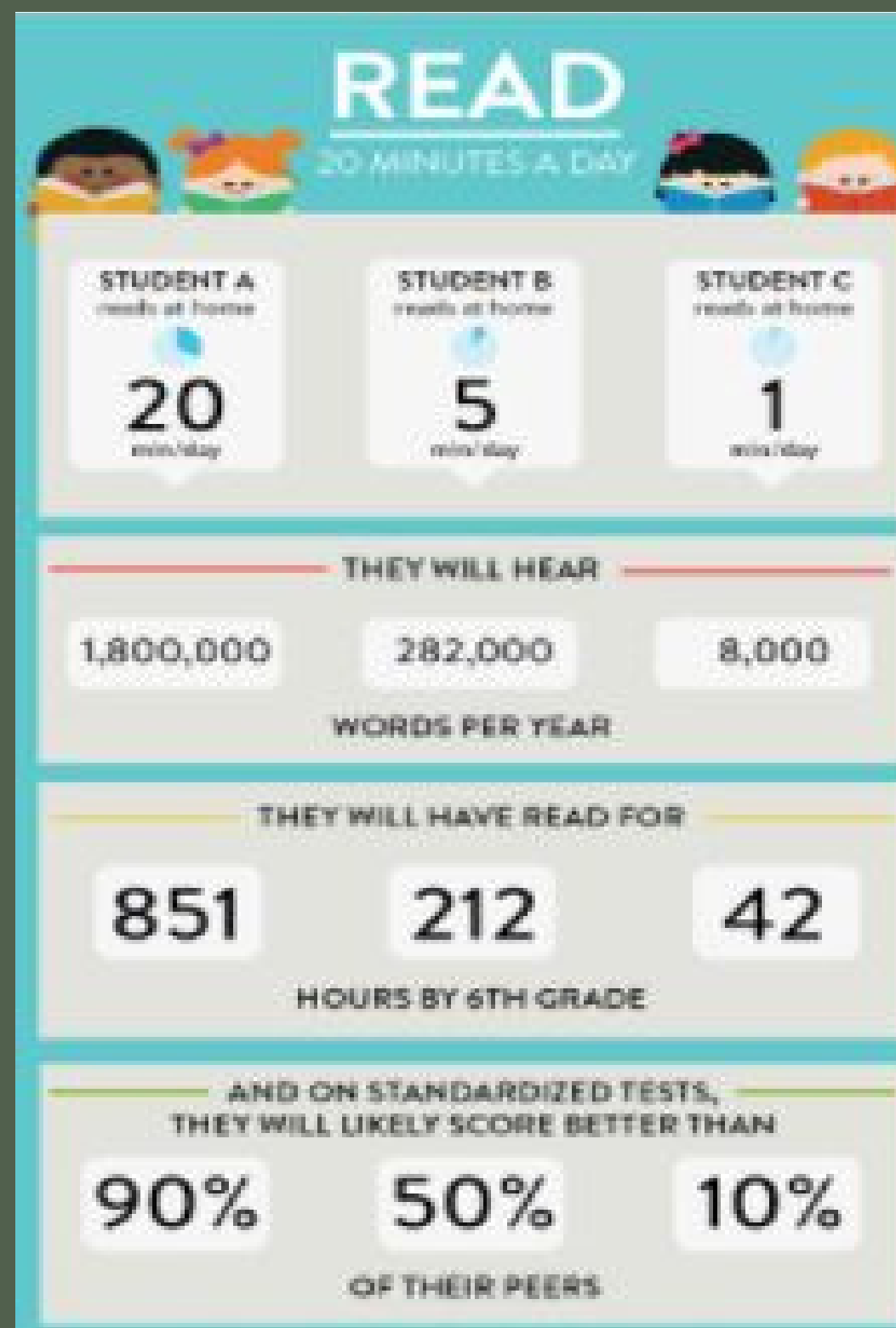
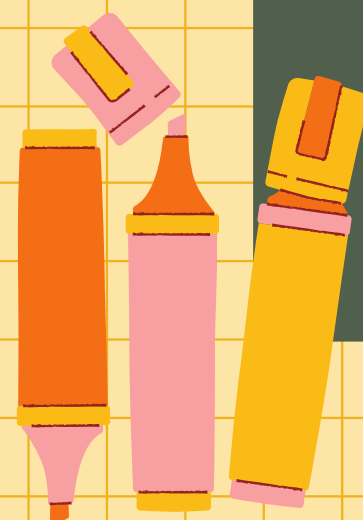
1. General Education English OR Team Taught English (2 teachers)
2. ESOL English Language Development OR Academic Language
3. General Education Science
4. General Education History
5. General Education Math 7
6. PE

Elective





Reading a book at home for 20-30 minutes each night! Students have homework in middle school! They will tell you they don't have homework, but they do!



Our school has a HOMEWORK club!

Teachers stay after school to help students.

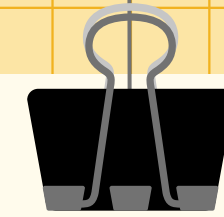
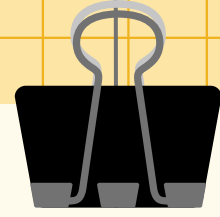
Teachers need your help getting your child to stay after school!

**AFTER SCHOOL**



**Mondays, Wednesdays,  
Thursdays, & Fridays  
Late Buses at 4:30**





# THANK YOU!

If you have questions or if you are worried, please email! We have staff who can speak/read few languages and we can translate your message!

Don't be afraid to email a teacher!

