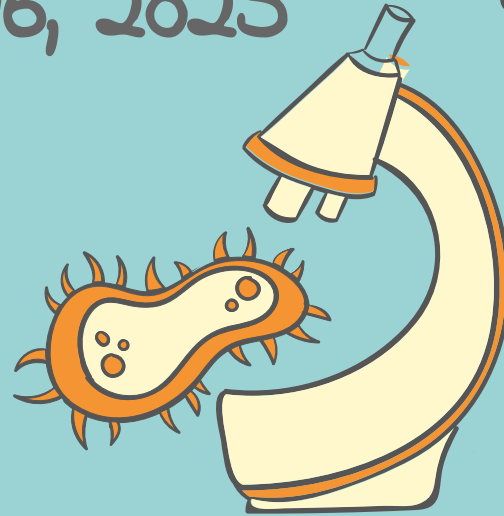
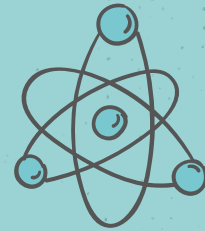
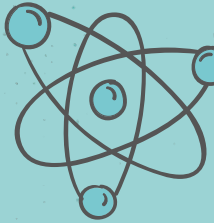


Science 7

Curriculum Night

Katherine Johnson MS

January 16, 2025



Overall Presentation

Questions at the End Please!



Science in
Middle
School

The
Curriculum
&
Supporting
Technology

Choosing
Appropriat
e Course
Level

Q&A with
7th Grade
Science
Teachers

About the teachers



Elementary school teachers are generalist.

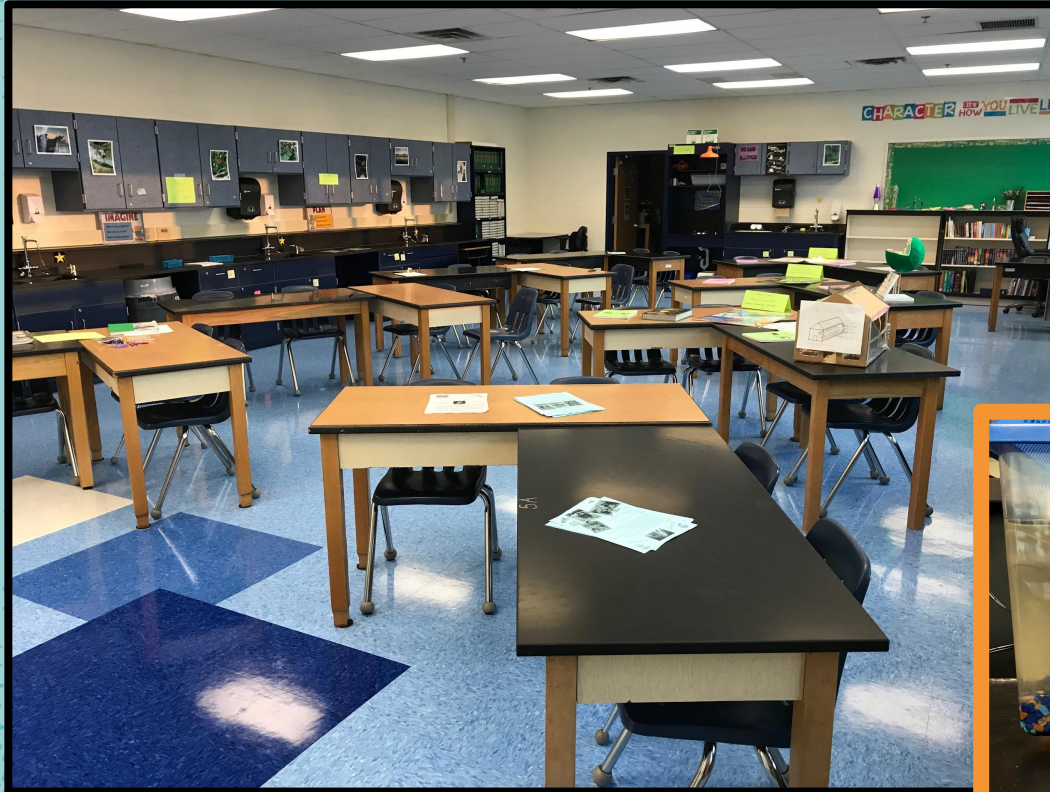
Middle school teachers are **specialist!**

We only teach 7th grade Science!

This is a LAB course with a dedicated lab space.



Science has Dedicated Labs



Units of Study



Natural
Ecosystem
§

Human
Impact on
Ecosystem
§

Living
Systems

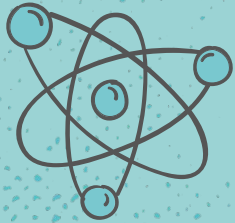
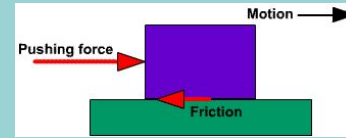
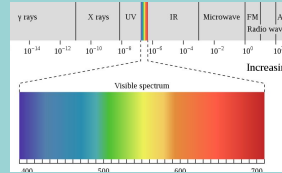
Heredity

8th Grade Science Units of Study

Introductory Chemistry

Introductory Physics

H	He																	Li	Be											B	C	N	O	F	Ne										
Na	Mg											Al	Si	P	S	Cl	Ar	K	Ca											Sc	Ti	V	Cr	Mn	Fe	Cobalt	Nickel	Cu	Zn	Ga	Ge	As	Se	Br	Kr
Rb	Sr											Y	Zr	Nb	Mo	Tc	Ru	Rh	Pd	Ag	Cd	In	Sn	Sb	Te	I	Xe	Ba	Lanthanum	Ce	Pr	Nd	Pm	Sm	Eu	Gd	Tb	Dy	Ho	Er	Tm	Yb	Lu		
Fr	Ra											Ac	Th	Pa	U	Np	Pu	American	Am	Cm	Bk	Cf	Es	Fm	Mendelevium	No	Lr	Rf	Hf	Ta	W	Re	Os	Ir	Pt	Au	Hg	Tl	Pb	Bi	Po	At	Rn		



Matter

Energy

Forces & Motion



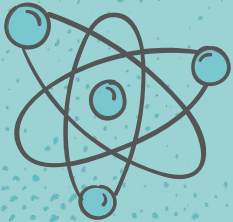
SOL is in 8th Grade

The SOL covers:

6th grade Science

7th grade Science

8th grade Science



Supporting Technology



Lab Notes

Paper notebook to support Notes, Research, Drawings, and Diagrams



Schoology

All assignments are posted in Schoology.



Lab Activities

We use lab equipment and models throughout the year.

Other Technology Tools



Google Suite

Google Docs, Slides, Sheets, Draw, and Jamboards (tools for collaboration)



Gizmo

Interactive explorations of ecosystems



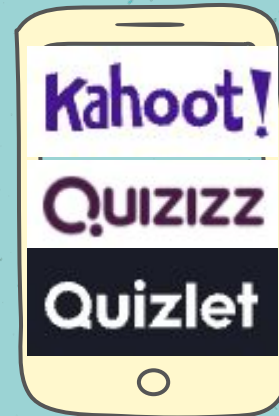
Newsela

Articles about Life Science



EdPuzzle YouTube

Video review and Notetaking



Review Activities

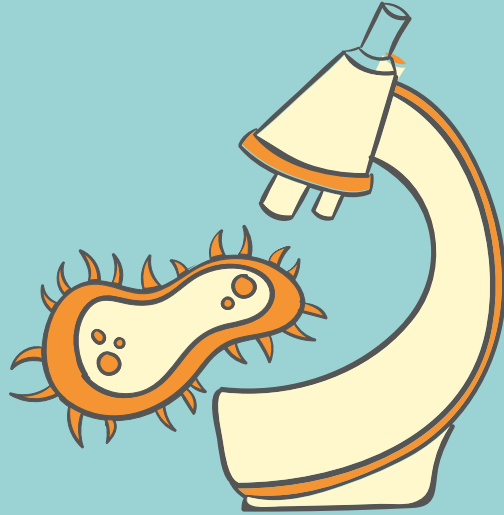
Interactive Review

Classwork Expectations

In Class

SAFETY FIRST

We typically have 2-3 activities with a short break time built into our days.



Homework

Most homework is CLASSWORK that was not completed during class or to study for an assessment.

Choosing the right level for Science

General

Classes

• Standard Placement

Advanced Classes

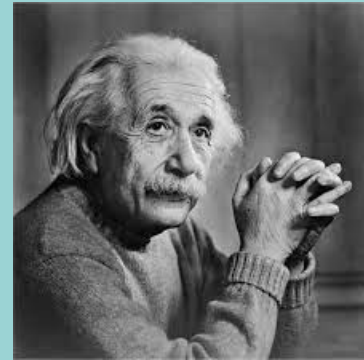
- Increased rigor
- Interested in learning
- On or above reading level
- Strong Academic behaviors
(focus, study skills, and self-advocacy)

SAME CURRICULUM

Supported reading and comprehension
Directions and procedures gated
Small group and class project work
More time for activities

Longer Reading Assignments
Expected to follow written directions/procedures
More independent and small group project work
Significant Independent / Group research project

QUESTIONS?



Portrait of a Graduate



Creative and
Critical Thinker



Goal-Directed
and Resilient
Individual



Communicator



Collaborator



Ethical and
Global Citizen

